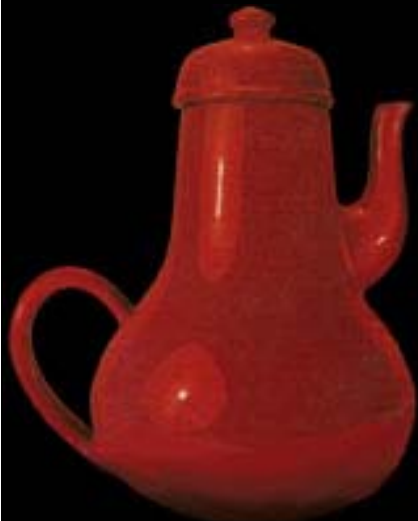


E-learning: a tool for teachers with a disability



USAB 2008.
Olga Revilla. Itakora.com
Licencia (CC) Attribution 3.0 Unported



Accessibility has usually focused on...



Students



**Teachers
& Tutors**

**Usability & Accesibility
Research on e-learning**



**IT Support
& Development**



**Administrative
Staff**



**Course
Creators**



But this paper focus on...



Students



Teachers
& Tutors

**Usability & Accesibility
Research on e-learning**



IT Support
& Development



Administrative
Staff



Course
Creators



Next step after education

Educational level

	With disability	Without disability
No studies	8%	1%
Elementary Degree	51%	25%
Secondary Degree (1 st grade)	22%	29%
Secondary Degree (2 nd grade)	10%	21%
University	9%	24%

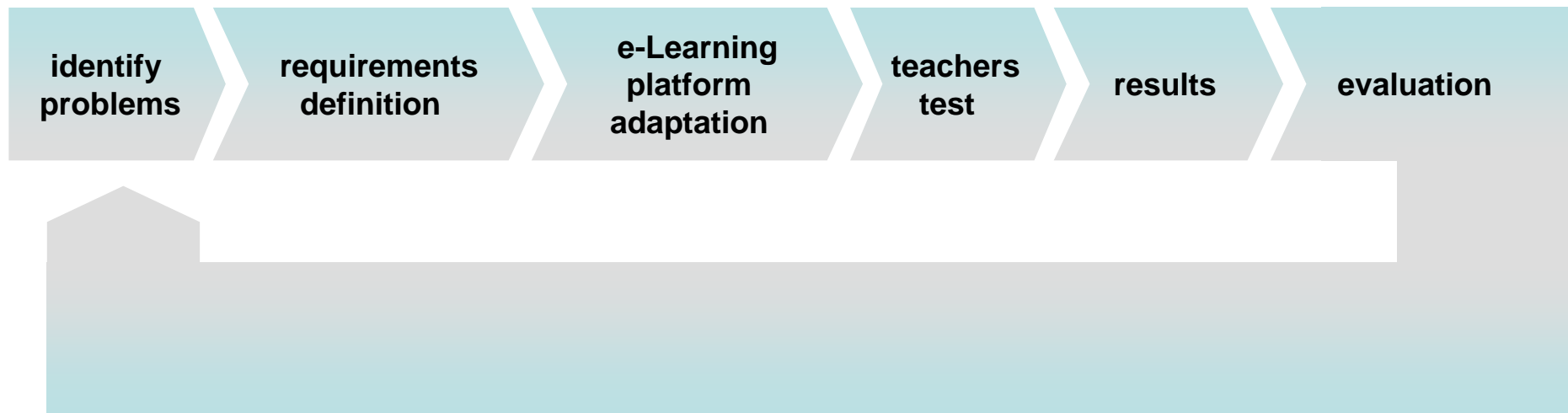
Job Status

	With disability	Without disability
Not-working	66%	30%
Workers unemployed	5%	8%
Workers employed	29%	62%

Spanish Institute for Statistics (INE): Persons with a disability and their relationship with job market.
Based on the Active Population Quest (April-June 2002).

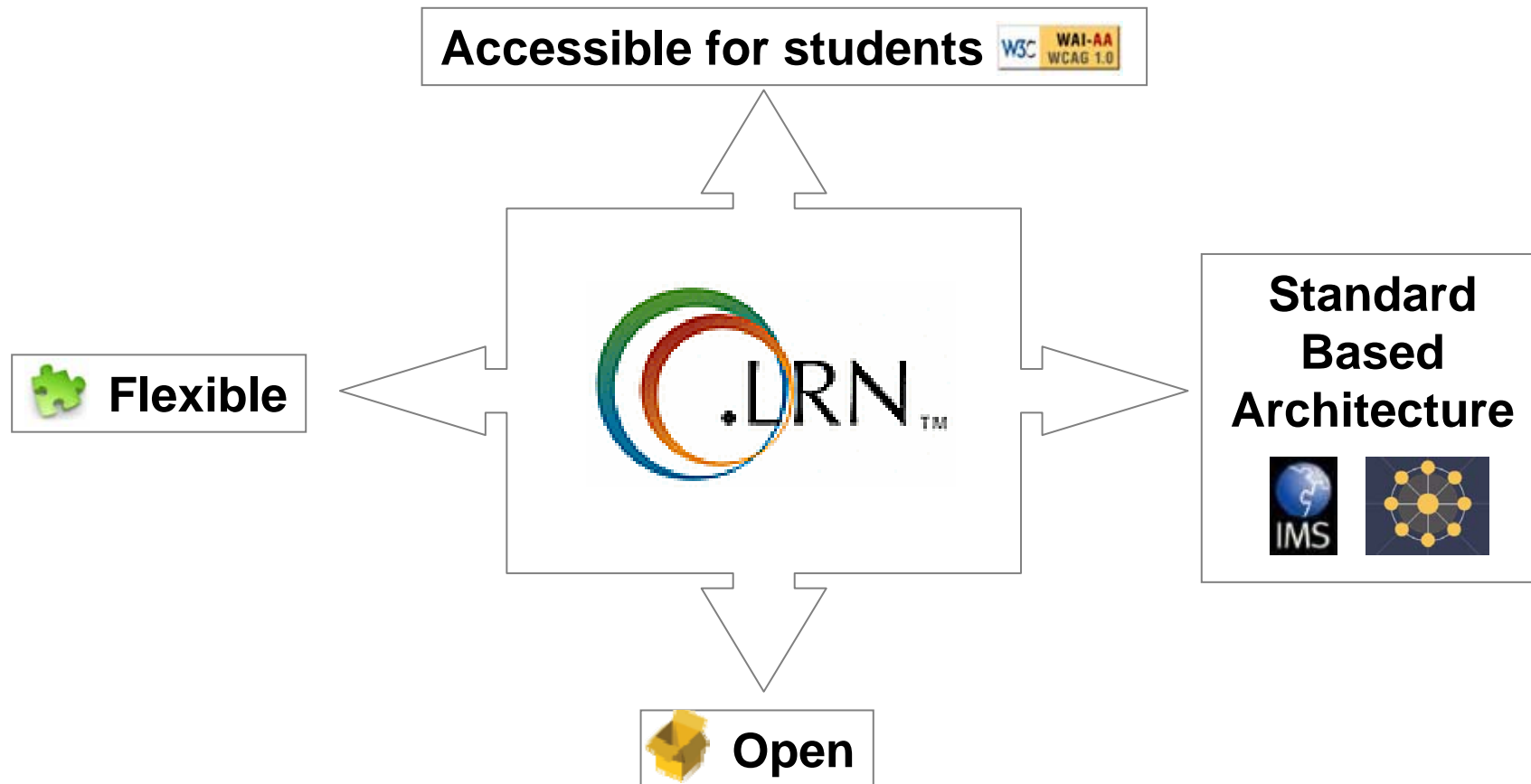


Context of this research





Why .LRN





Let's get closer onto the teachers problems & needs...

- Spanish elementary and secondary teachers.
- No official data exists about disabilities in this group.
- Little previous research done before on disability & teachers
- Facts deduced from
 - press news,
 - trade unions reports,
 - legislation basis
 - Statistical reports





Problem 1. Access to the job

- competitive examination
- special quota for people with disability
- a committee must certify this person is capable for the job
 - not clear rules
 - subjective
 - privacy is mandatory
- the teacher should be capable of perform all the duties associated to the job without a full-time assistant
 - This includes not only pedagogical tasks but also the control, surveillance, assistance and attention of the children.





Problem 2. Mental disorders

→ Stress, depression, isolation feel and anxiety are very common (12,2% of the sick leaves)

→ Reasons

- transformation of social relationships,
- moral values changes,
- diversity of the pupils and
- the increasing number of problem students.
- transfer of responsibilities from the family to the teachers,
- the lack of social recognition of these professionals and
- the assumption of others responsibilities for lack of specialized personnel.





Problem 3. Violence at the school

- 65% of teachers have problems of violence with students.
- Spanish punishment for the violent students is sending them off the school for some days.
- This systems does not satisfy teachers, who must care too soon for a problematic student.





Problem 4. Educational material not adapted

- As teachers with disabilities are not 'the usual' in the educational primary level, almost everything is not accessible: books, posters, audiovisual material, etc.
- Legislation forbids to deny the purchase of special materials
- But budgetary reasons can be –and are- argued to delay these materials.





Problem 5. Infrastructures not adapted

- Legislation forced the schools to be adapted to students with physical disabilities
- Some teachers also benefits: stairs and ramps, toilets, doors, emergency exits...
- Some teachers with other disabilities don't benefit, as students with that disability are usually taught in special schools (for the blindness, for the deafness, etc.).





Problem 6. Mobility to the school

- Many teachers do not live close to their schools, and often they have to drive or be driven to the school.
- Although there are grants for these issues, teachers must dedicate part of their salary in special transport.





Summary

Problems	Requirements
Access to the job	Help teachers to guarantee the control, surveillance, assistance and attention of the students
Mental disorders	Generate confidence and well-being
	Improve the communication among the others teachers and the administration staff
	Personalization the effort for each student
Violence at the school	No face-to-face teaching, anonymous tracking
Educational material not adapted	Validation of contributions (WCAG checkpoints)
Infrastructures not adapted	The administration space of the e-Learning platform has to be accessible, not only student space
	Offer different types of activities
Mobility to the school	The platform should be device independent, no need for special devices



Thanks and see you